

Installing 2149 Uniflex™ with 2016 Side flap

Uniflex used on the Jamb (side) and 2016 side flap in top position (header)

If Uniflex mounted in top position (header), the 2016 side flap stop will be installed using conventional methods.

Tools

Use Either:

Craftsmen Hand-Cut™ 2 ½” Utility Cutter

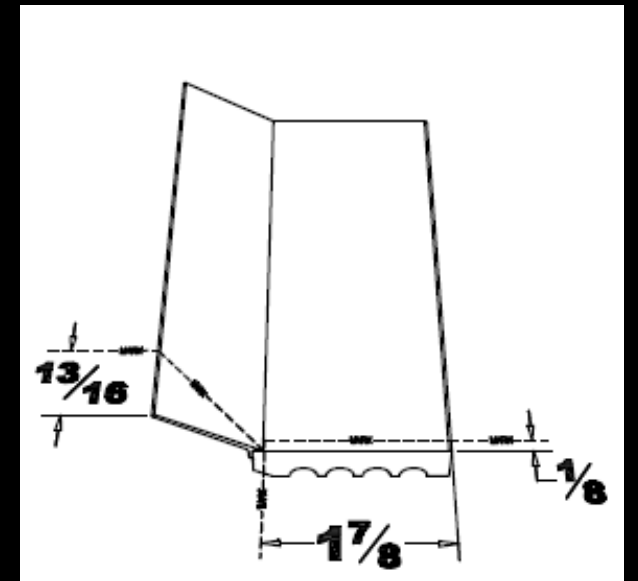
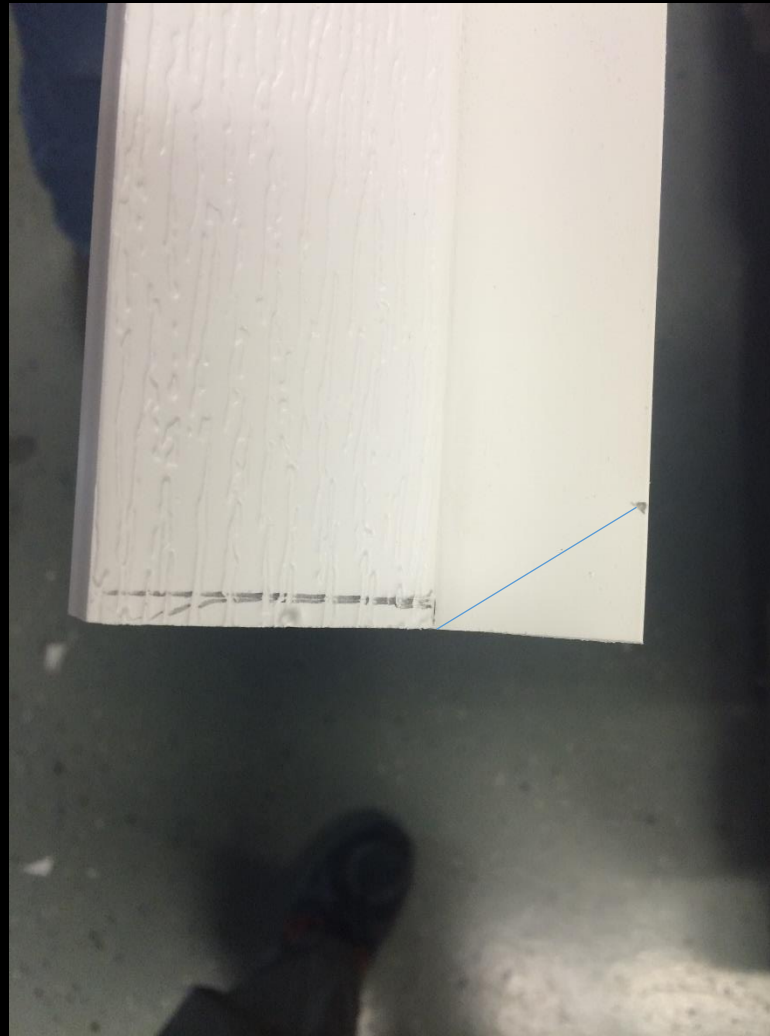
Ronan™ Multi-Cut 4” Cutter

Or Equivalent

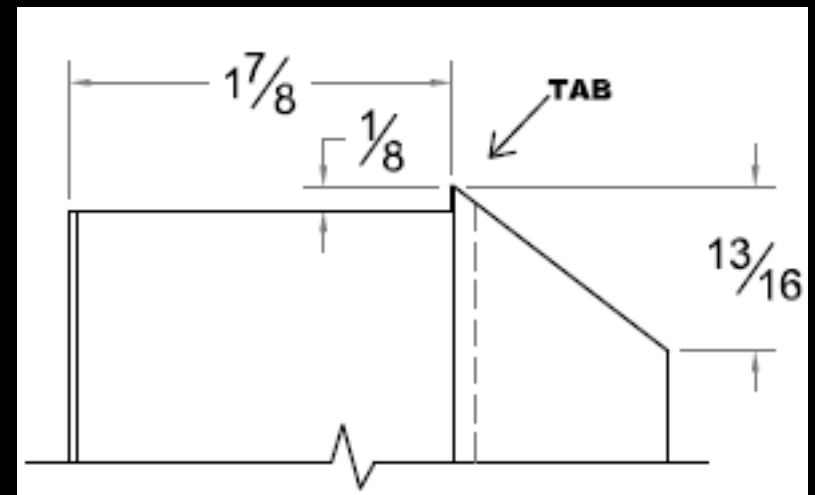
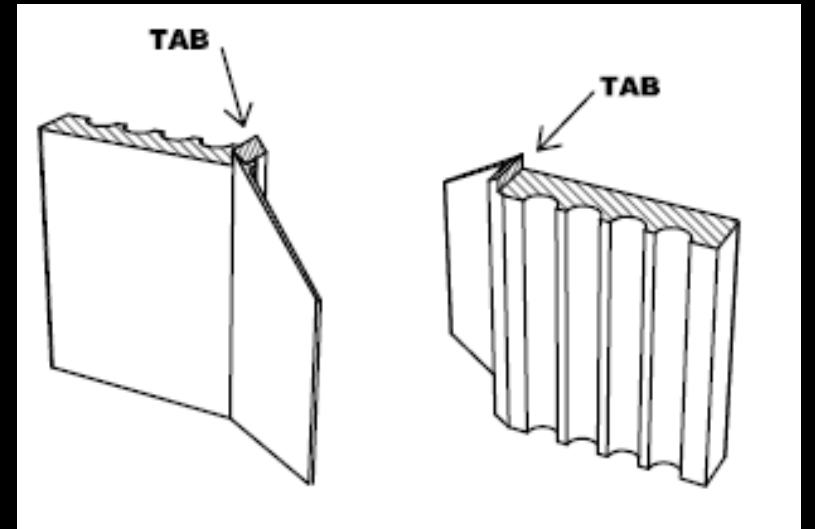
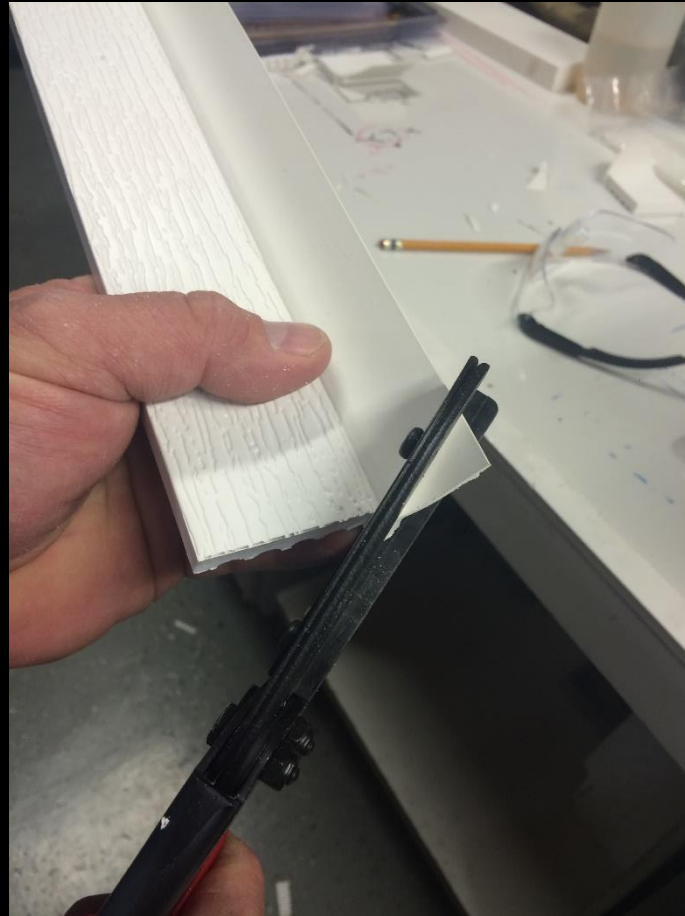
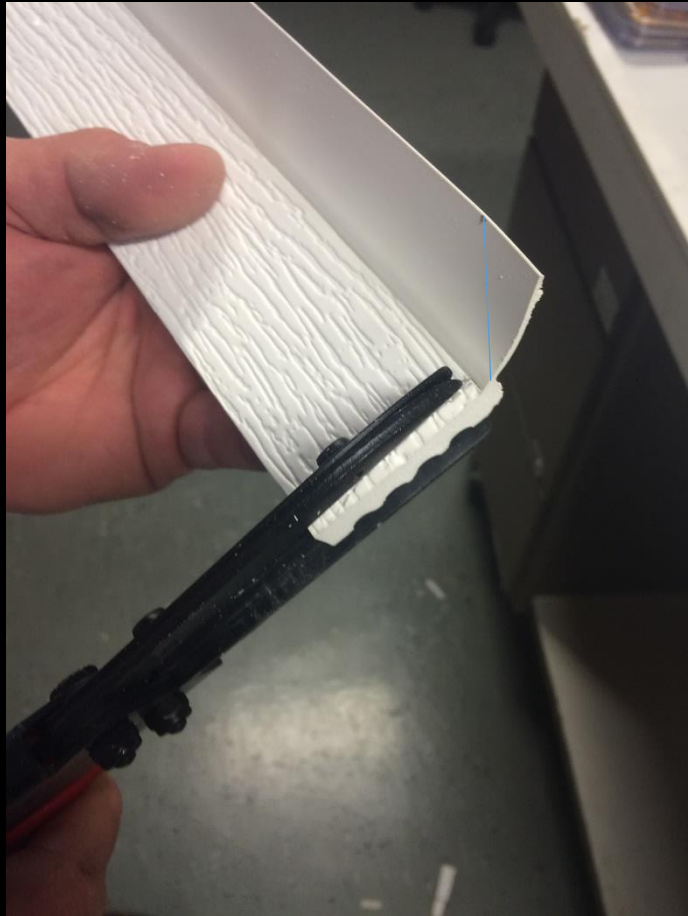
Pencil



Position Uniflex™ against installed 2016 profile to mark intersecting points. Mark flex intersecting point and where the flex starts on the profile.



Cut 2149 as marked. Two cuts are required (as illustrated in photos).
Cut piece will resemble drawing.



Position 2149 Uniflex™ tightly against the 2016 side flap in the header location and fasten.

