

Installing 2149 Uniflex™ with 2211 top flap

Uniflex used on the Jamb (side) top mount flex in top position (header).

If Uniflex mounted in top position (header), the top mounted flex stop will be installed using conventional methods.

Tools

Use Either:

Craftsmen Hand-Cut™ 2 ½" Utility Cutter

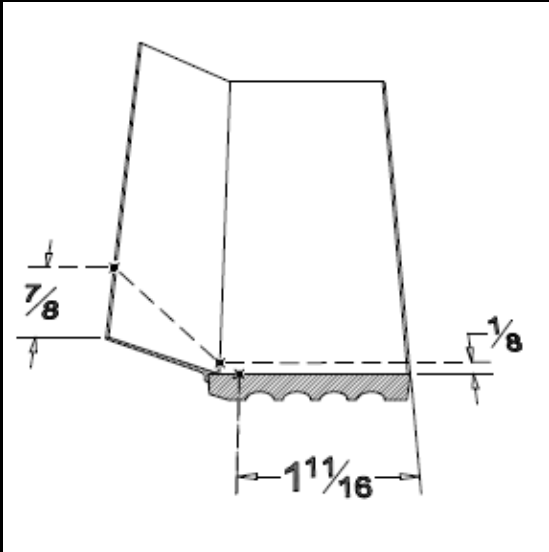
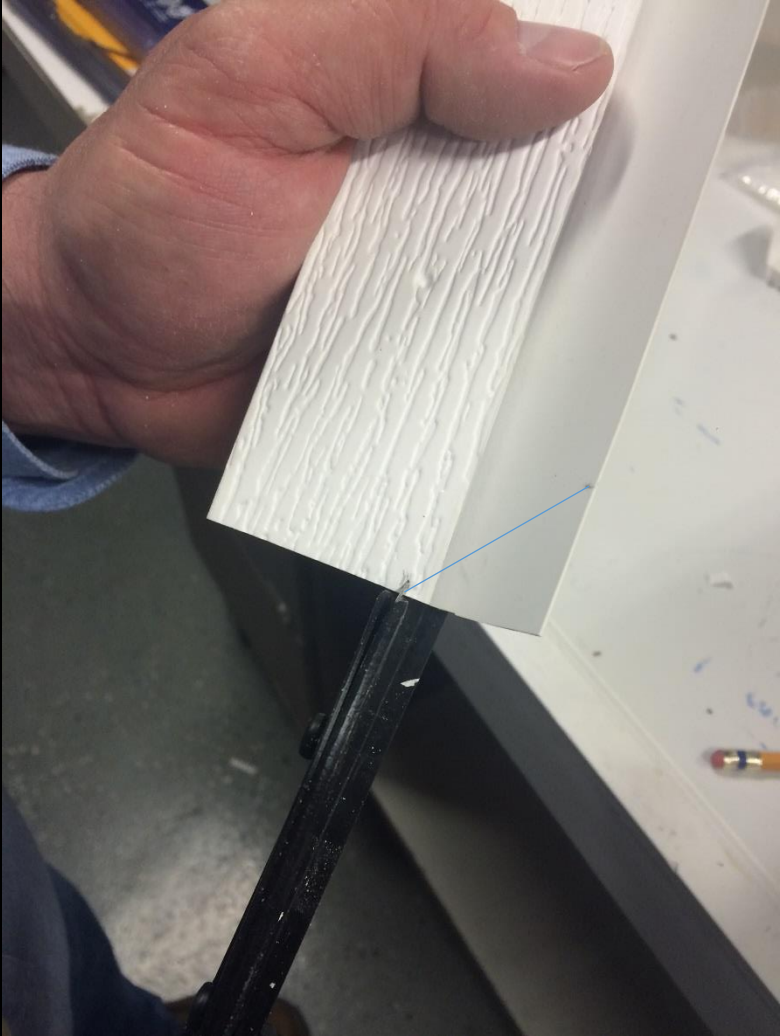
Ronan™ Multi-Cut 4" Cutter

Or Equivalent

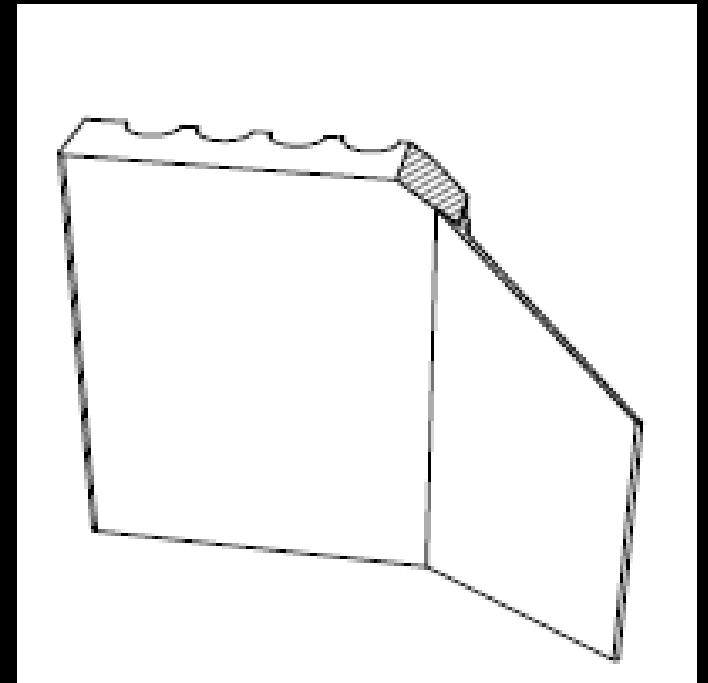
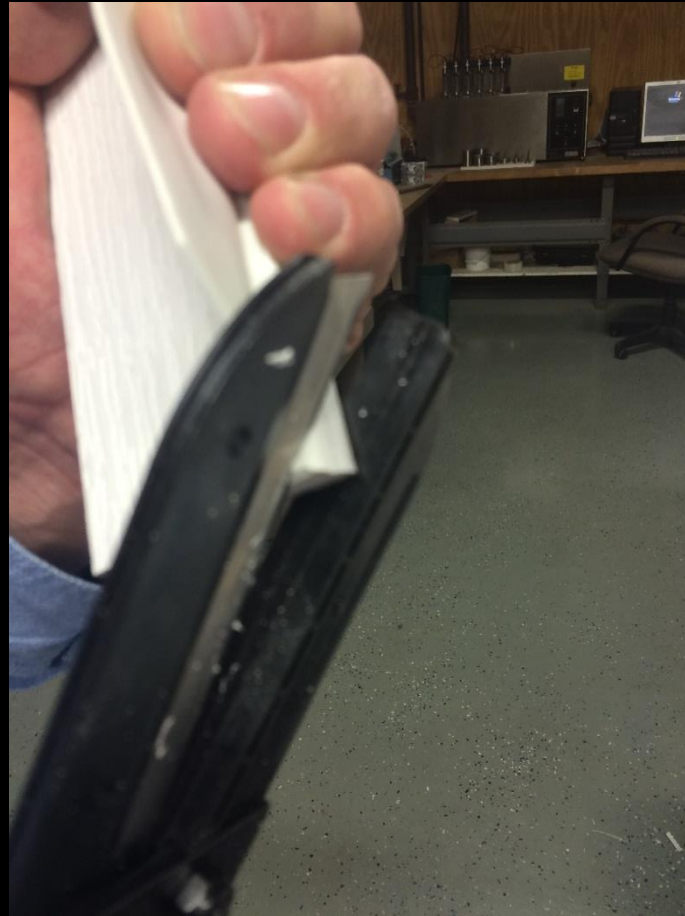
Pencil



Position Uniflex™ against installed 2211 profile to mark intersecting points. Mark flex intersecting points and where the flex starts on the 2211 profile



Cut 2149 Uniflex™ profile as marked. Ensure you cut through the body of the profile as indicated in the center photo. Cut piece will resemble drawing.



Position 2149 Uniflex™ tightly against the 2211 profile top flap head and fasten.

